

## **STUDENT SATISFACTION SURVEY REPORT, 2019-2020**

### **ABOUT THE SURVEY:**

The students of an institution are the core stakeholders and every activity undertaken by the institute is focused on creating a barrier free and favorable environment to help them excel in their academics. This survey is modeled on the questionnaire recommended by NAAC. The questionnaire asks for feedback on a range of topics, including the classroom experience, the performance of administrative functions, and the quality of extracurricular the institution offers. An online student satisfaction survey can be delivered in a variety of ways, but email is often the most effective method.

### **GUIDELINES FOR STUDENTS:**

- A student will have to respond to all the questions compulsorily with sincere effort and thought.
- Student identity will not be revealed.
- This survey is being conducted by A.N.R College, Gudivada with the aim to upgrade the quality in highereducation.
- Each question has five options and the students are required to choose the most appropriate one.
- Students are required to give answers for the following questions:
  1. Please confirm this is the first and only time you answer this survey.  
a) Yes b) No
  2. Age:
  3. Branch /Department:
  4. Gender:  
a) Female b) Male c) Transgender
  5. What degree/program are you pursuing now?  
a) Bachelors b) Masters

## **SURVEY PROCESS:**

- The survey is conducted and reported by Internal Quality Assurance Cell (IQAC) with the support of Heads and Coordinators of all the Departments. The Questioners were prepared in the form of Google Form and circulated to all the Departments and then to Students through Coordinators.
- The feedback was taken on different attributes like; Basic Facilities, Basic Services, Co-curricular and Extracurricular Activities. The responses obtained on these dimensions are compiled into a Spread Sheet, analyzed and Logical Conclusions are drawn therefrom.
- The Questionnaire consisting of 21 questions is shared with the students and their responses are noted and analyzed graphically in terms of percentage. After analysis, results are analyzed by IQAC Team.
- The results of the survey will help the institution to understand both short term and long term needs of the students and initiate remedial action to improve the facilities wherever it is required. The outcome of this survey will provide a base for planning for the future.
- The IQAC sincerely thanks all the members of the Management, Principal, and Heads of the Departments & Staff, Coordinators of the Departments for permissions and implementation of the survey. IQAC conveys thanks to the students who have expressed their opinions and/or views sincerely.

## **QUESTIONS ASKED IN QUESTIONNAIRE:**

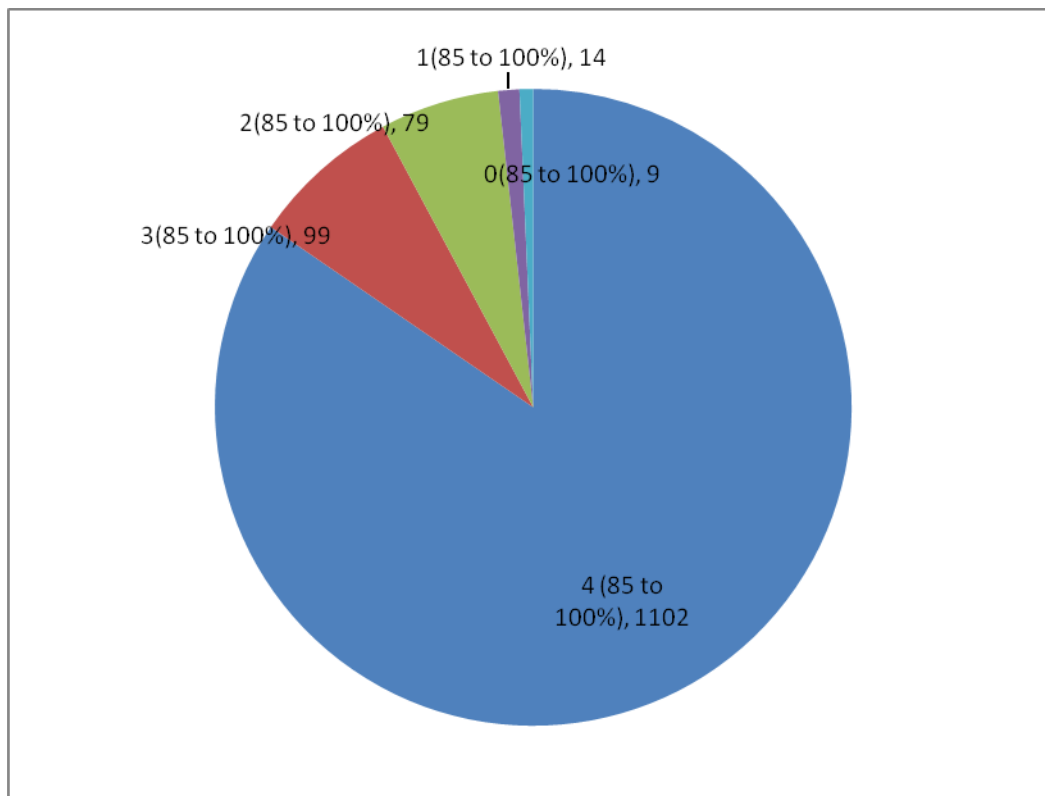
1. How much of the syllabus was covered in the class?
2. How well did the teachers prepare for the classes?
3. How well is the teachers able to communicate?
4. The Teacher's approach to teaching can best be described as
5. Fairness of the internal evaluation process by the teachers

6. Was your performance in assignments discussed with you?
7. The teacher takes active interest in arranging field visit for students.
8. The teaching process in the class room facilitates you in cognitive, social and emotional growth.
9. The teacher provides multiple opportunities to learn and grow
10. The teacher informs you about your expected competencies, course outcomes and programme outcomes.
11. Your teacher does a necessary follow-up with an assigned task to you.
12. The teacher illustrates the concepts through examples and applications.
13. The teacher identifies your strengths and encourage you with providing right level of challenges.
14. The teacher is able to identify your weaknesses and help you to overcome them.
15. The teacher makes effort to engage students in the monitoring, review and continuous quality improvement of the teaching learning process.
16. The teachers use student centric methods, such as experiential learning, participative learning and problem solving for enhancing learning experiences.
17. The teacher encourages you to participate in extracurricular activities.
18. Efforts are made by the teacher to inculcate soft skills, life skills and employability skills to make you ready for the world of work
19. The teacher uses ICT Tools such as LCD Projector, Multimedia, etc. while teaching
20. The overall quality of teaching-learning process in your institute is very good.
21. Give three observations/ suggestions to improve the overall teaching-learning experience in the class with reference to the teacher.

## ANALYSIS OF QUESTIONNAIRE:

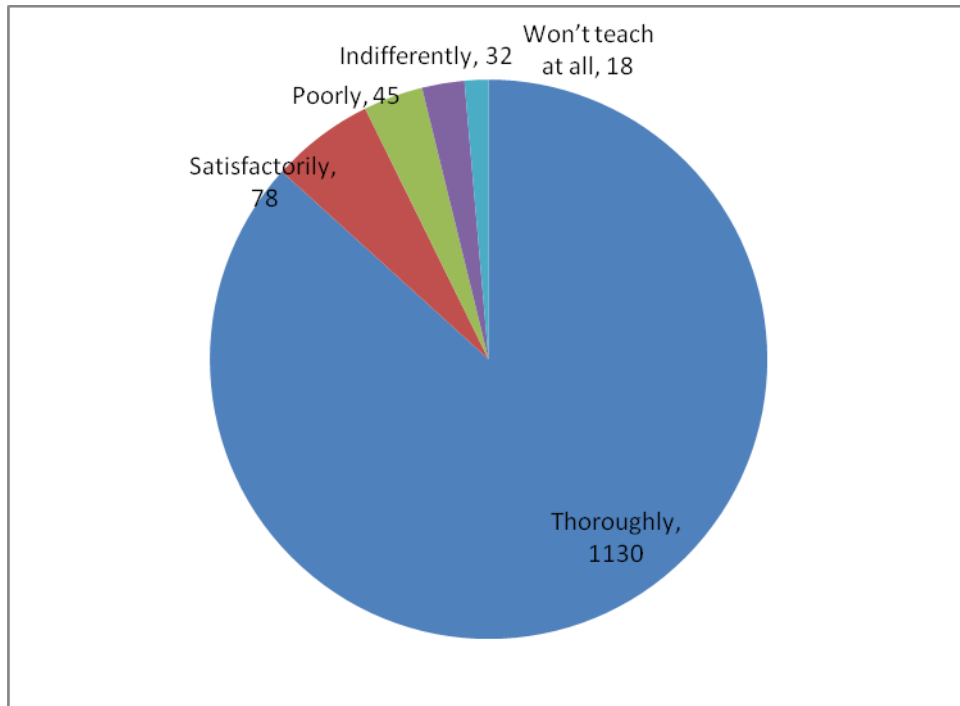
### 1. How much of the syllabus was covered in the class?

S.No	Opinion	No of Respondents
1	4 (85 to 100%)	1102
2	3(85 to 100%)	99
3	2(85 to 100%)	79
4	1(85 to 100%)	14
5	0(85 to 100%)	9
	<b>Total</b>	<b>1303</b>



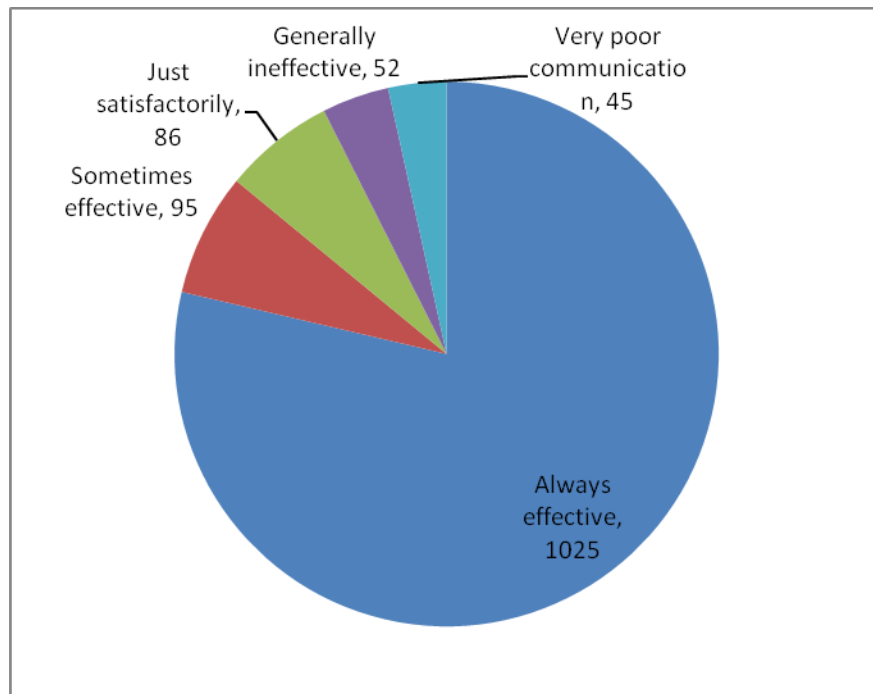
## 2. How well did the teachers prepare for the classes?

S.No	Opinion	No of Respondents
1	Thoroughly	1130
2	Satisfactorily	78
3	Poorly	45
4	Indifferently	32
5	Won't teach at all	18
	<b>Total</b>	<b>1303</b>



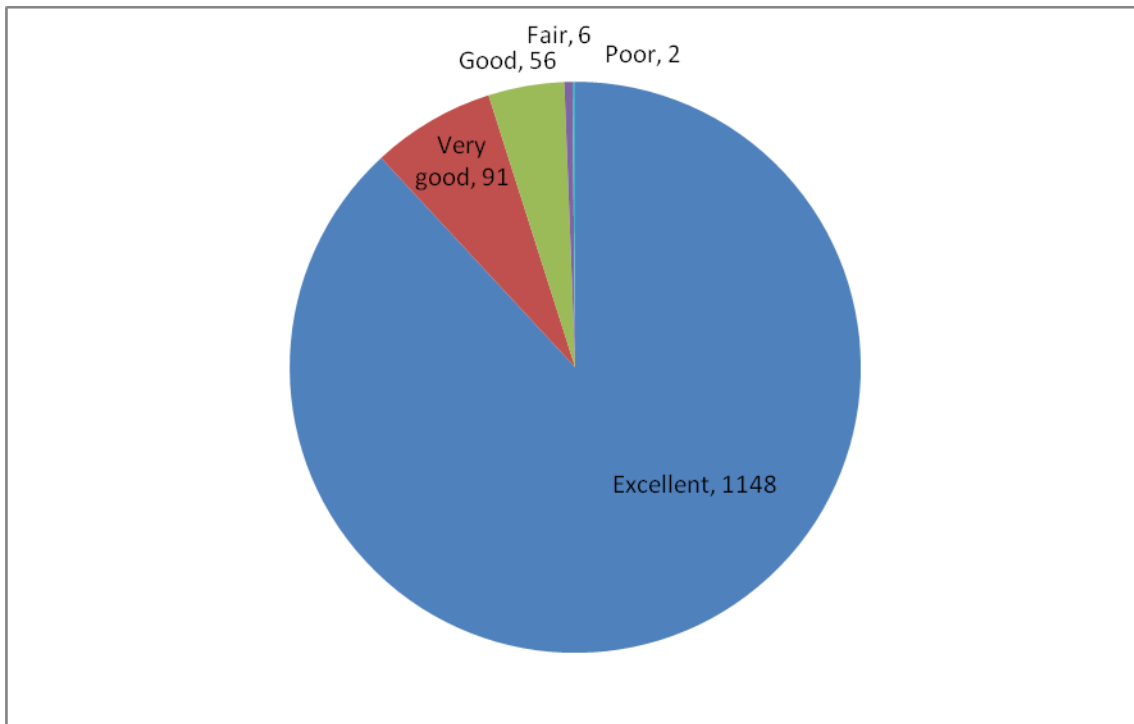
### 3. How well were the teachers able to communicate?

S.No	Opinion	No of Respondents
1	Always effective	1025
2	Sometimes effective	95
3	Just satisfactorily	86
4	Generally ineffective	52
5	Very poor communication	45
	<b>Total</b>	<b>1303</b>



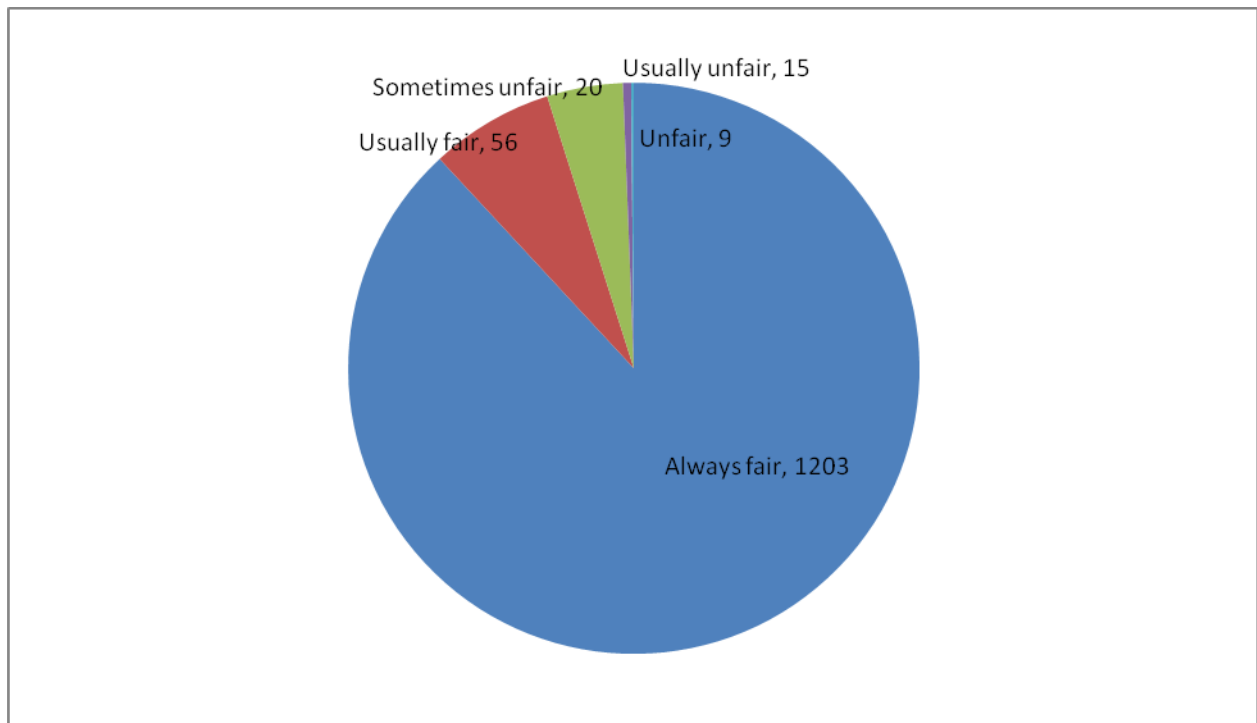
**4. The Teacher's approach to teaching can best be described as**

<b>S.No</b>	<b>Opinion</b>	<b>No of Respondents</b>
1	Excellent	1148
2	Very good	91
3	Good	56
4	Fair	6
5	Poor	2
	<b>Total</b>	<b>1303</b>



## 5. Fairness of the internal evaluation process by the teachers

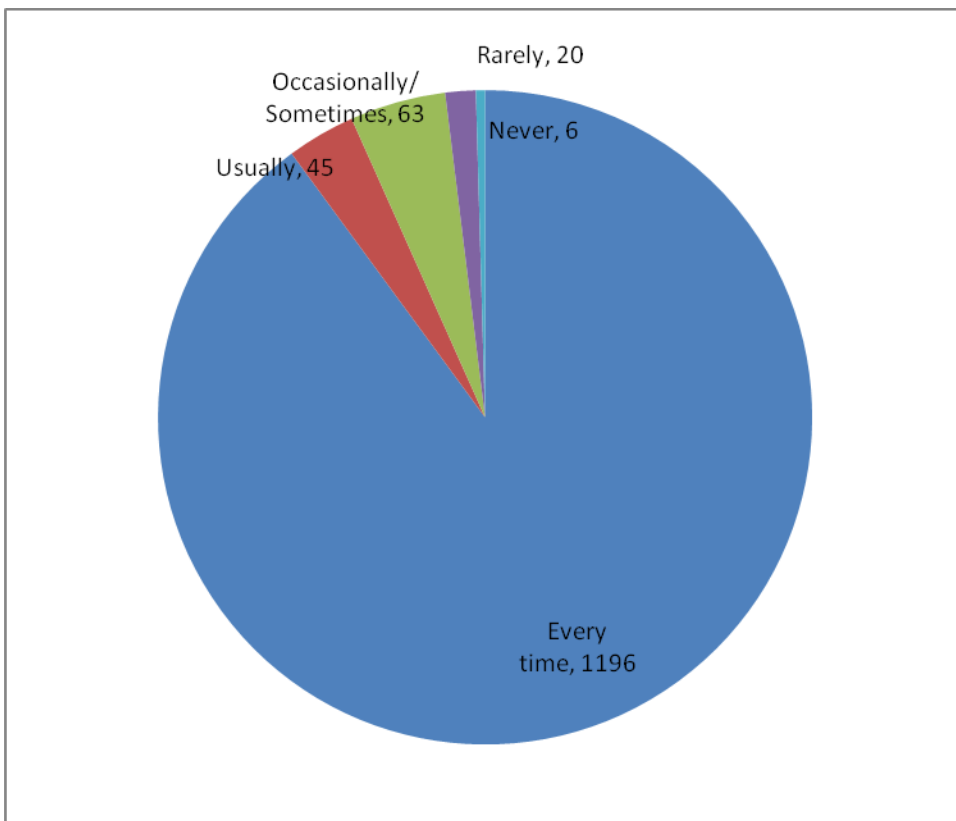
S.No	Opinion	No of Respondents
1	Always fair	1203
2	Usually fair	56
3	Sometimes unfair	20
4	Usually unfair	15
5	Unfair	9
	<b>Total</b>	<b>1303</b>





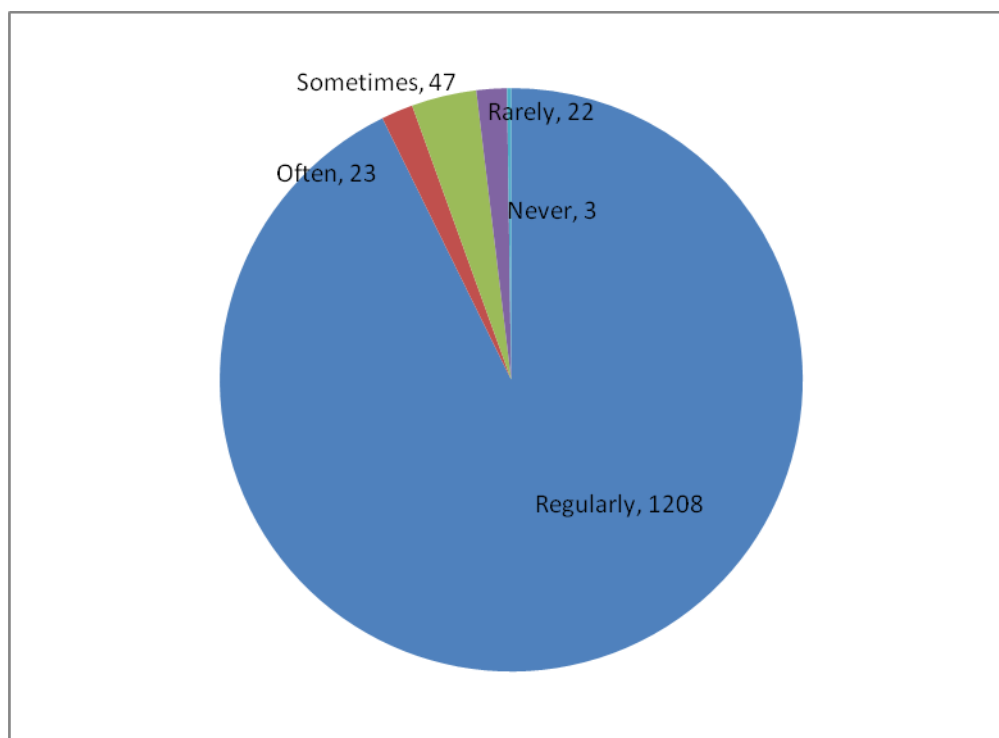
**6. Was your performance in assignments discussed with you?**

<b>S.No</b>	<b>Opinion</b>	<b>No of Respondents</b>
1	Every time	1196
2	Usually	45
3	Occasionally/Sometimes	63
4	Rarely	20
5	Never	6
	<b>Total</b>	<b>1303</b>



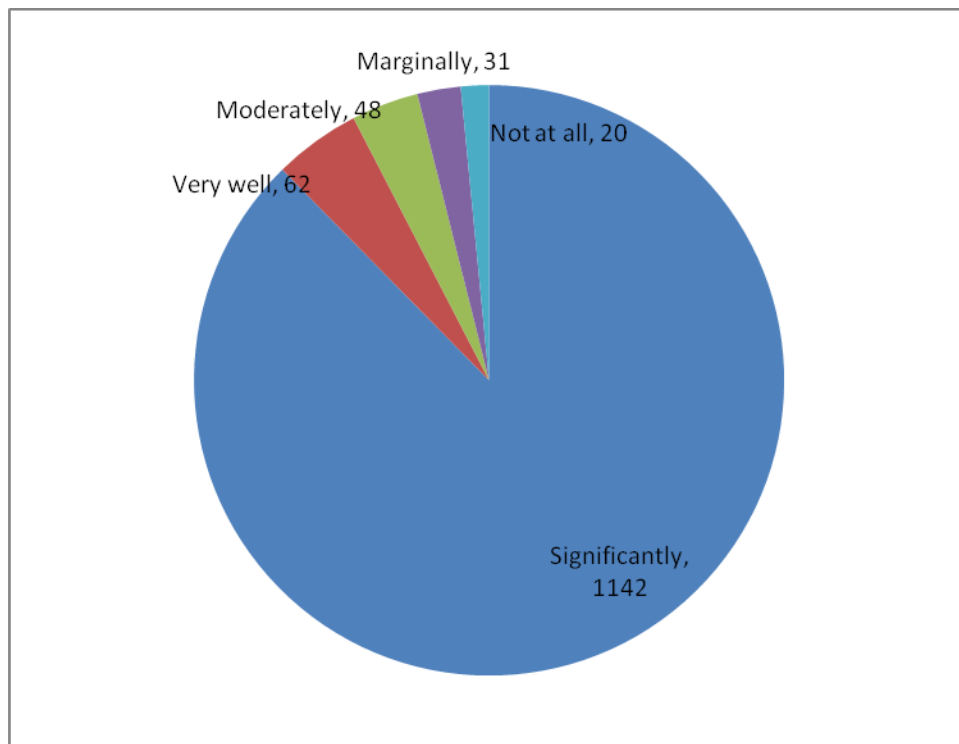
**7. The institute take active interest in promoting internship, student exchange, field visit opportunities for students**

<b>S.No</b>	<b>Opinion</b>	<b>No of Respondents</b>
1	Regularly	1208
2	Often	23
3	Sometimes	47
4	Rarely	22
5	Never	3
	<b>Total</b>	<b>1303</b>



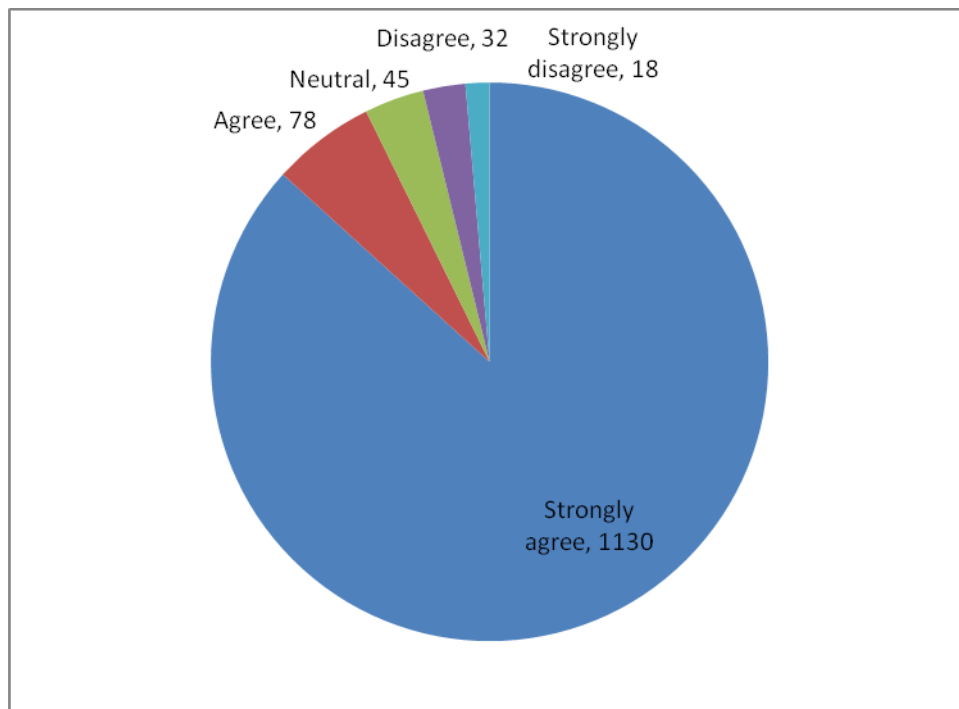
**8. The teaching and mentoring process in your institution facilitate you in cognitive, social and emotional growth**

<b>S.No</b>	<b>Opinion</b>	<b>No of Respondents</b>
1	Significantly	1142
2	Very well	62
3	Moderately	48
4	Marginally	31
5	Not at all	20
	<b>Total</b>	<b>1303</b>



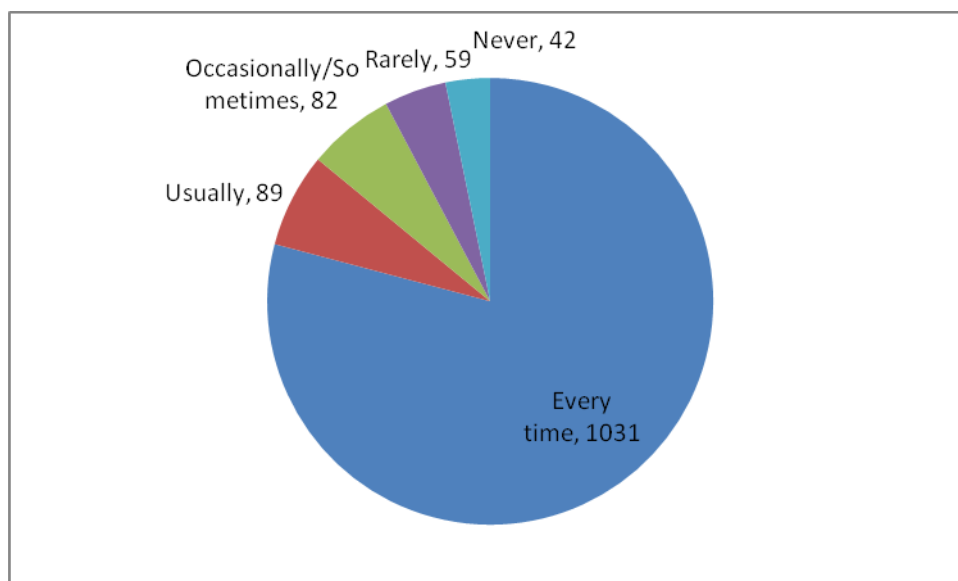
**9. The institution is providing multiple opportunities to learn and grow**

<b>S.No</b>	<b>Opinion</b>	<b>No of Respondents</b>
1	Strongly agree	1130
2	Agree	78
3	Neutral	45
4	Disagree	32
5	Strongly disagree	18
	<b>Total</b>	<b>1303</b>



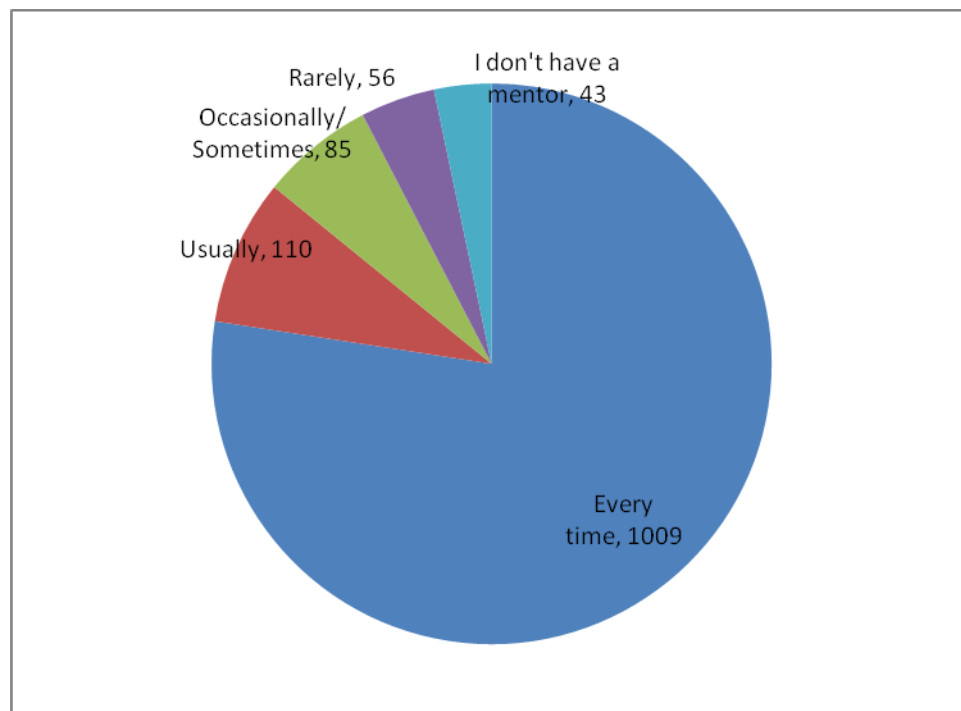
**10. Teachers inform you about your expected competencies, course outcomes and programme outcomes**

<b>S.No.</b>	<b>Opinion</b>	<b>No of Respondents</b>
1	Every time	1031
2	Usually	89
3	Occasionally/Sometimes	82
4	Rarely	59
5	Never	42
	<b>Total</b>	<b>1303</b>



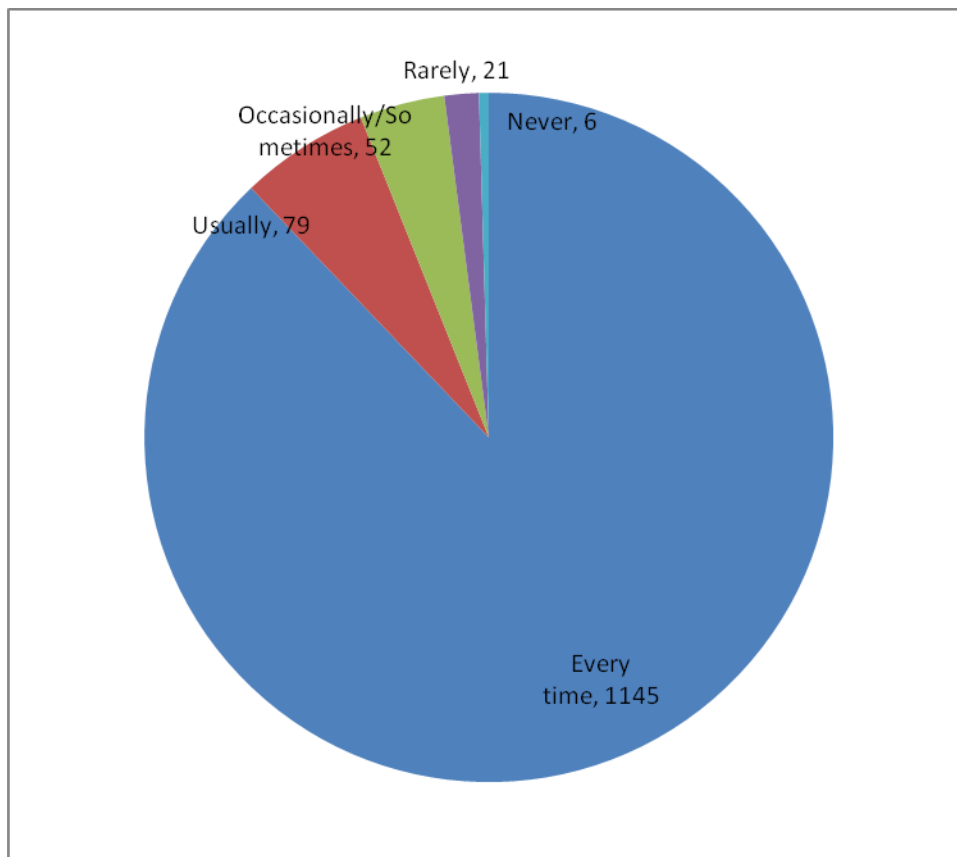
**11. Your mentor does a necessary follow-up with an assigned task to you.**

<b>S.No</b>	<b>Opinion</b>	<b>No of Respondents</b>
1	Every time	1009
2	Usually	110
3	Occasionally/Sometimes	85
4	Rarely	56
5	I don't have a mentor	43
	<b>Total</b>	<b>1303</b>



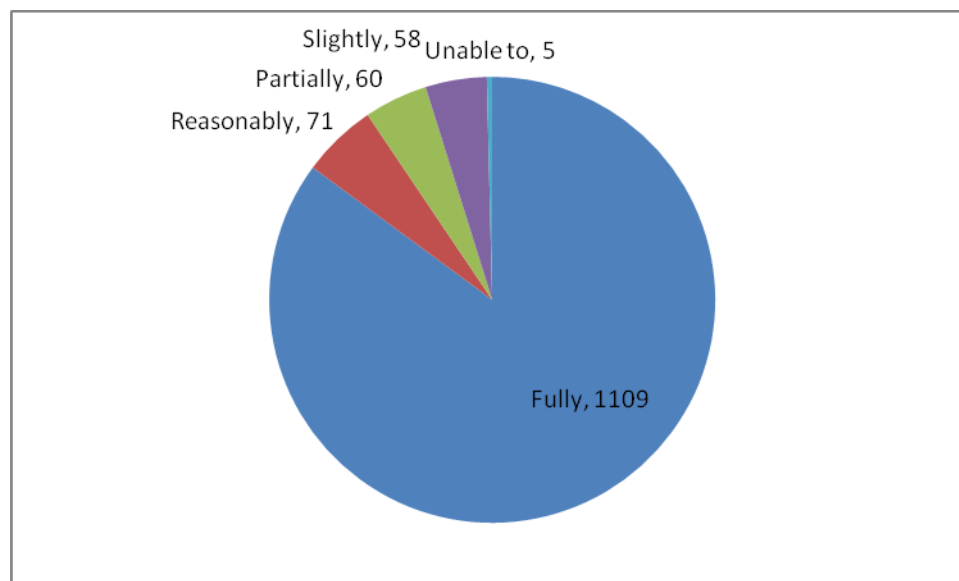
## 12. The teachers illustrate the concepts through examples and applications

S.No	Opinion	No of Respondents
1	Every time	1145
2	Usually	79
3	Occasionally/Sometimes	52
4	Rarely	21
5	Never	6
	<b>Total</b>	<b>1303</b>



**13. The teachers identifying your strengths and encouraging you by providing right level of challenges**

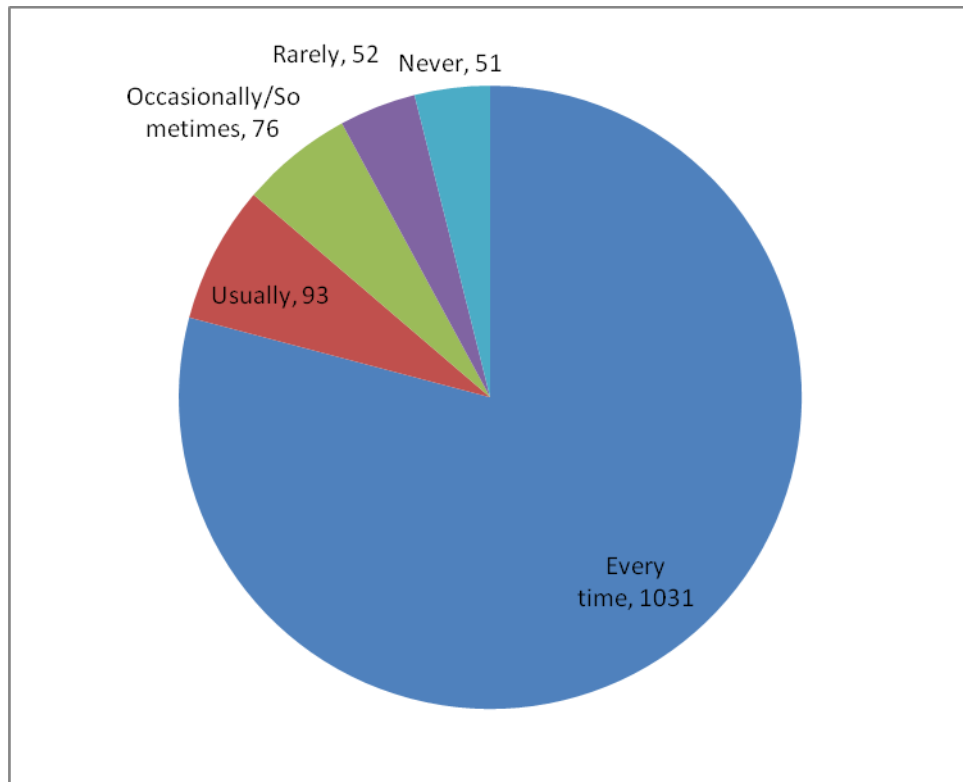
<b>S.No</b>	<b>Opinion</b>	<b>No of Respondents</b>
1	Fully	1109
2	Reasonably	71
3	Partially	60
4	Slightly	58
5	Unable to	5
	<b>Total</b>	<b>1303</b>





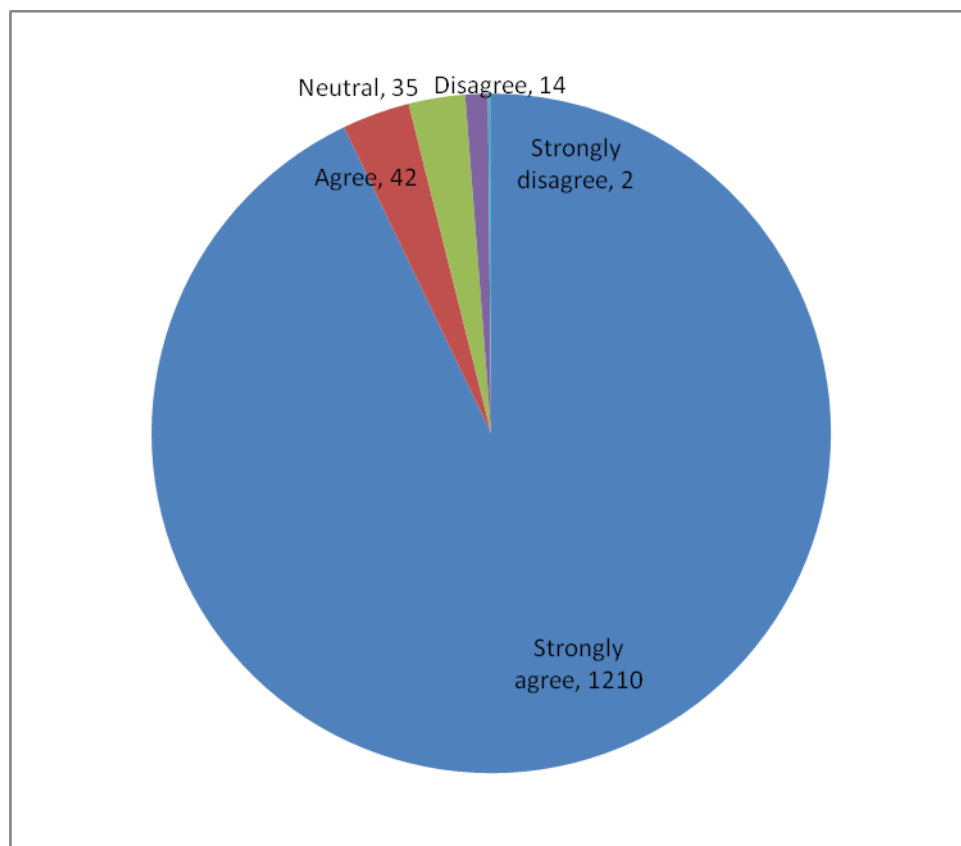
**14. The teachers identify your weaknesses and help you to overcome them**

<b>S.No</b>	<b>Opinion</b>	<b>No of Respondents</b>
1	Every time	1031
2	Usually	93
3	Occasionally/Sometimes	76
4	Rarely	52
5	Never	51
	<b>Total</b>	<b>1303</b>



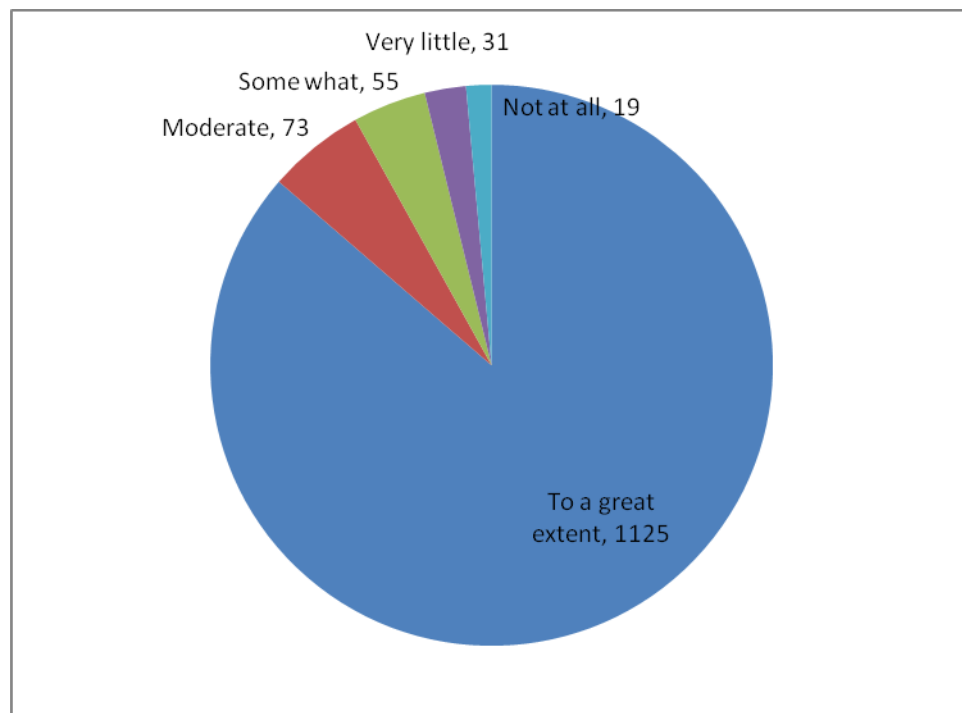
**15. The institution makes effort to engage students in the monitoring, review and continuous quality improvement of the teaching learning process**

<b>S.No</b>	<b>Opinion</b>	<b>No of Respondents</b>
1	Strongly agree	1210
2	Agree	42
3	Neutral	35
4	Disagree	14
5	Strongly disagree	2
	<b>Total</b>	<b>1303</b>



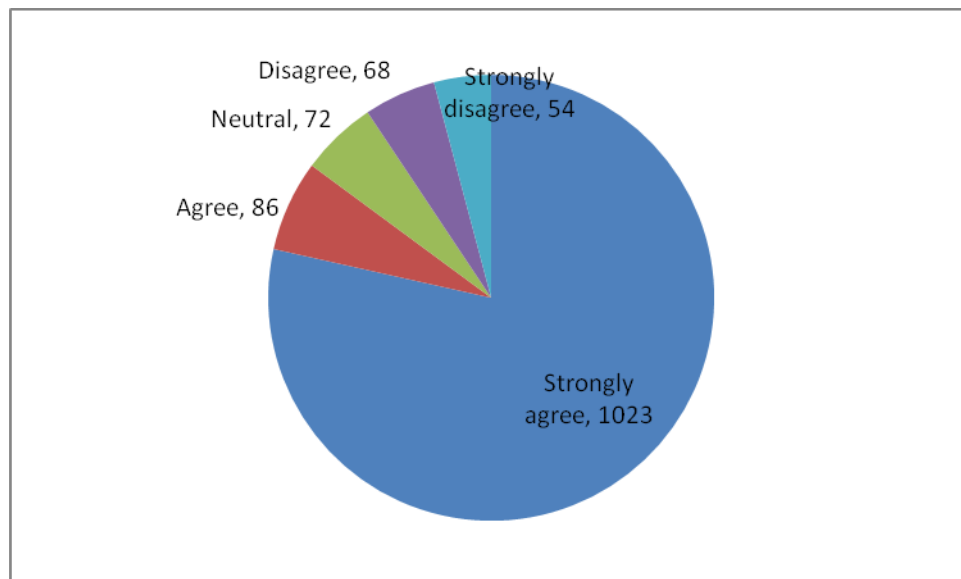
**16. The institute/ teachers use student centric methods, such as experiential learning, participative learning and problem solving methodologies for enhancing learning experiences**

<b>S.No</b>	<b>Opinion</b>	<b>No of Respondents</b>
1	To a great extent	1125
2	Moderate	73
3	Some what	55
4	Very little	31
5	Not at all	19
	<b>Total</b>	<b>1303</b>



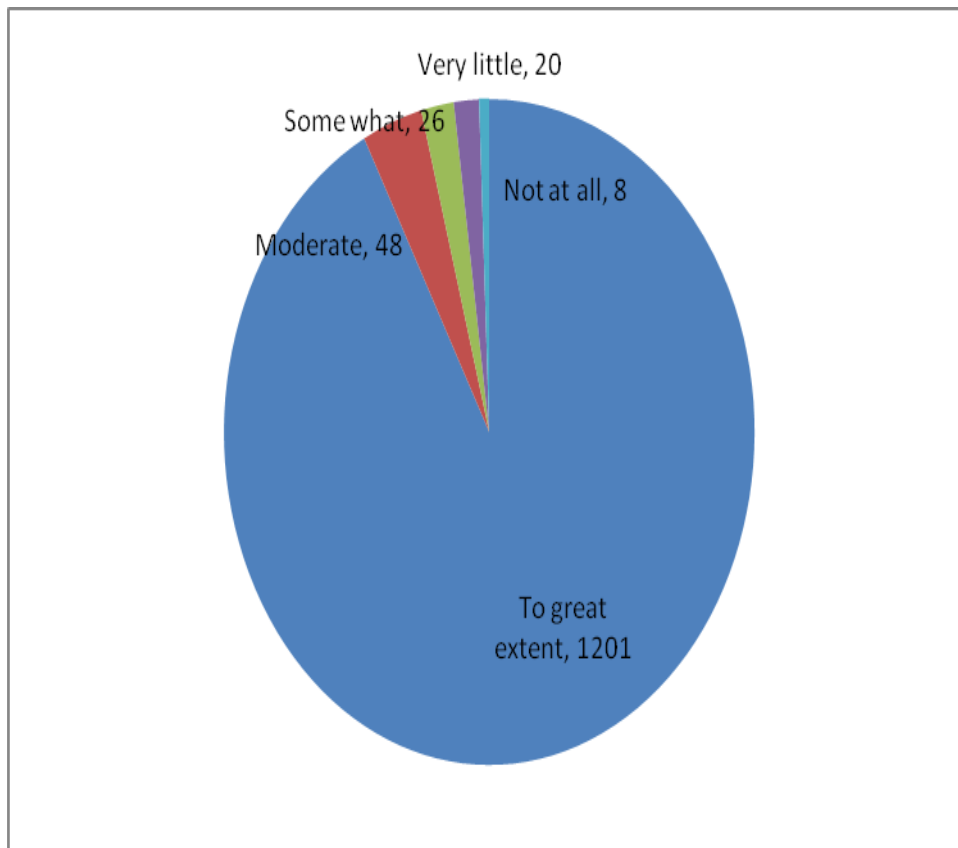
### 17. Teachers encourage you to participate in extracurricular activities

S.No	Opinion	No of Respondents
1	Strongly agree	1023
2	Agree	86
3	Neutral	72
4	Disagree	68
5	Strongly disagree	54
	<b>Total</b>	<b>1303</b>



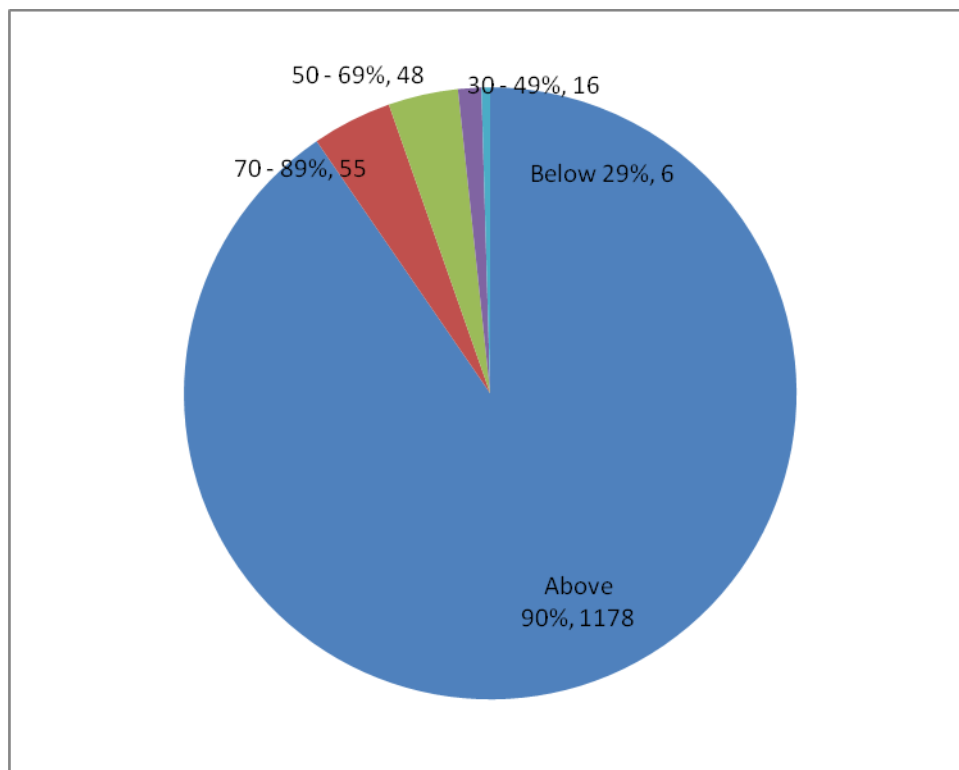
**18. The efforts are made by the institute/ teachers to inculcate soft skills, life skills and employability skills to make you ready for the world of work**

<b>S.No</b>	<b>Opinion</b>	<b>No of Respondents</b>
1	To a great extent	1201
2	Moderate	48
3	Some what	26
4	Very little	20
5	Not at all	8
	<b>Total</b>	<b>1303</b>



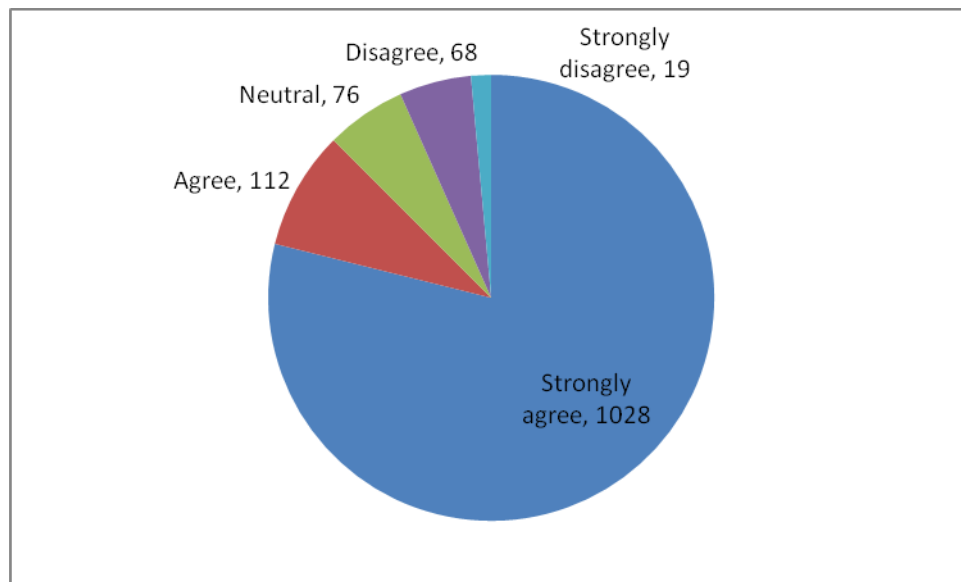
**19. What percentage of teachers uses ICT Tools such as LCD Projector, Multimedia, etc. while teaching?**

<b>S.No</b>	<b>Opinion</b>	<b>No of Respondents</b>
1	Above 90%	1178
2	70 - 89%	55
3	50 - 69%	48
4	30 - 49%	16
5	Below 29%	6
	<b>Total</b>	<b>1303</b>



**20. The overall quality of teaching-learning process in your institute is very good**

<b>S.No</b>	<b>Opinion</b>	<b>No of Respondents</b>
1	Strongly agree	1028
2	Agree	112
3	Neutral	76
4	Disagree	68
5	Strongly disagree	19
	<b>Total</b>	<b>1303</b>



PRINCIPAL